



DOOR DRIVES

LDO AC 4.0 AND LDO AC 4.5

DOOR DRIVE LDO AC 4.0 AND
LDO AC 4.5

BRUSHLESS SYNCHRONOUS
MOTOR FOR STANDARD DOORS
AND FOR INDUSTRIAL USE

CAN-BUS FUNCTION

SERVICE FUNCTION VIA WLAN

CONVERSION KIT FOR
THIRD-PARTY DOORS

CONVERSION KIT FOR
ETG-DOORS

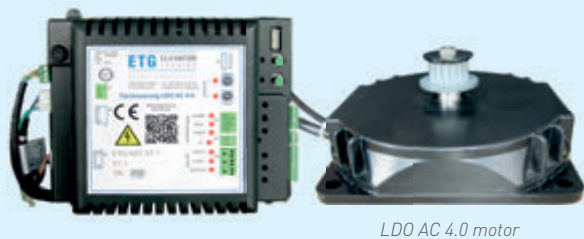
ETG ELEVATOR
TRADING

German manufacturer

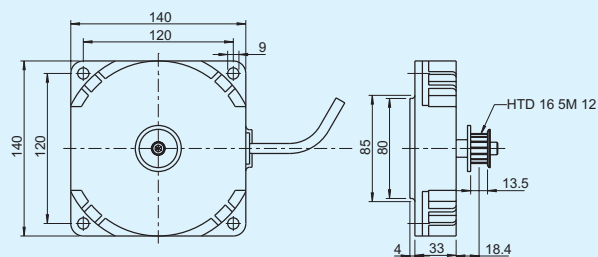
LDO AC 4.0 and LDO AC 4.5

Features and advantages of LDO AC 4.0 and LDO AC 4.5

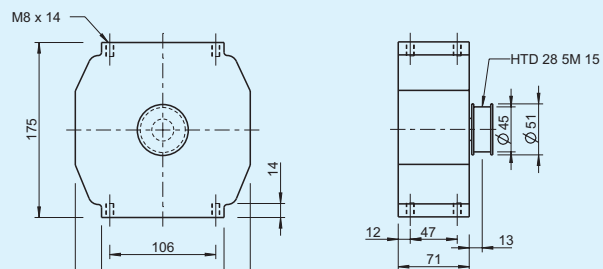
- gearless and brushless door drive unit
- frequency-controlled door control
- automatic door panel mass determination » optimal adjustment of motion profile
- motor with integrated incremental encoder
- automatic recognition of rotation direction during door width determination
- LDO AC 4.0 for standard doors (up to 200kg moving mass)
- LDO AC 4.5 for heavy doors and industrial use (up to 450kg moving mass)



LDO AC 4.0 motor



LDO AC 4.5 motor



Specifics

- first start-up of control possible without additional equipment
- symmetric beneficial motor design
- smart obstacle memory during repeated door closing
- status indication by LED's
- control connection analogue or via CANopen

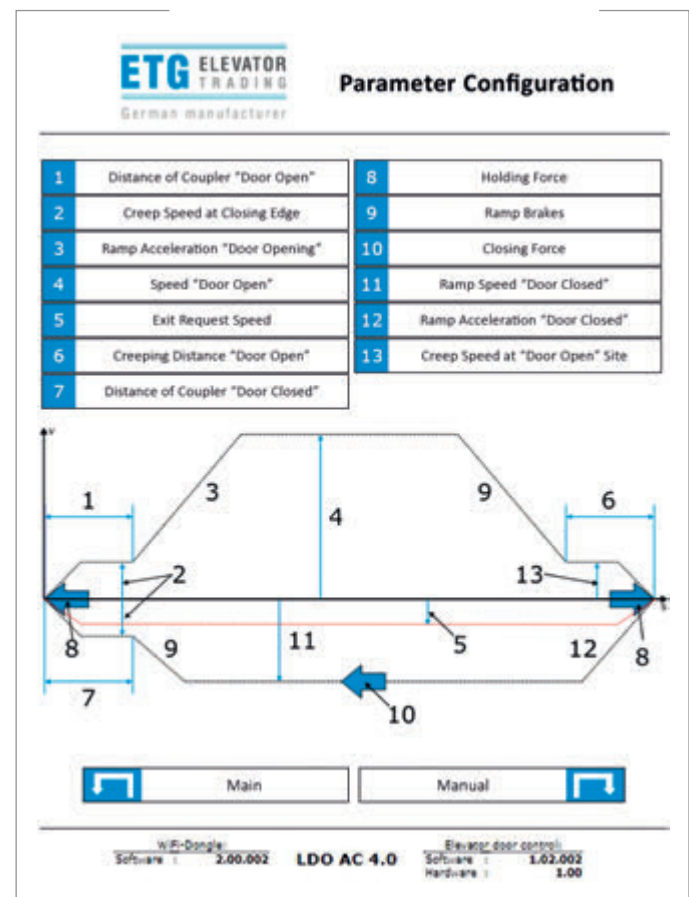
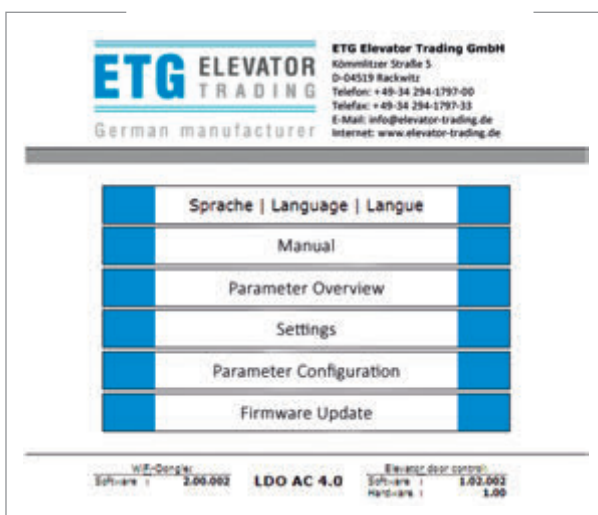
LDO AC 4.0 and LDO AC 4.5

- CANopen interface for
 - signal input of door drive
 - signal output of status report
 - the purpose of evaluating the drive- and door status
 - determination of electrical current changes during opening and closing movements
 - reading out of set parameter values and configurations
 - process monitoring and evaluation
 - planning of maintenance visits



Service function

- professional optimisation of the motion profile via WLAN interface through mobile phone, tablet or laptop
- parameter setting through clear and easy-to-understand menu navigation
- language selection for the menu navigation possible
- explanations to parameters are included in the menu
- full overview of currently set parameter values
- simple software update by using the menu entry "software update"

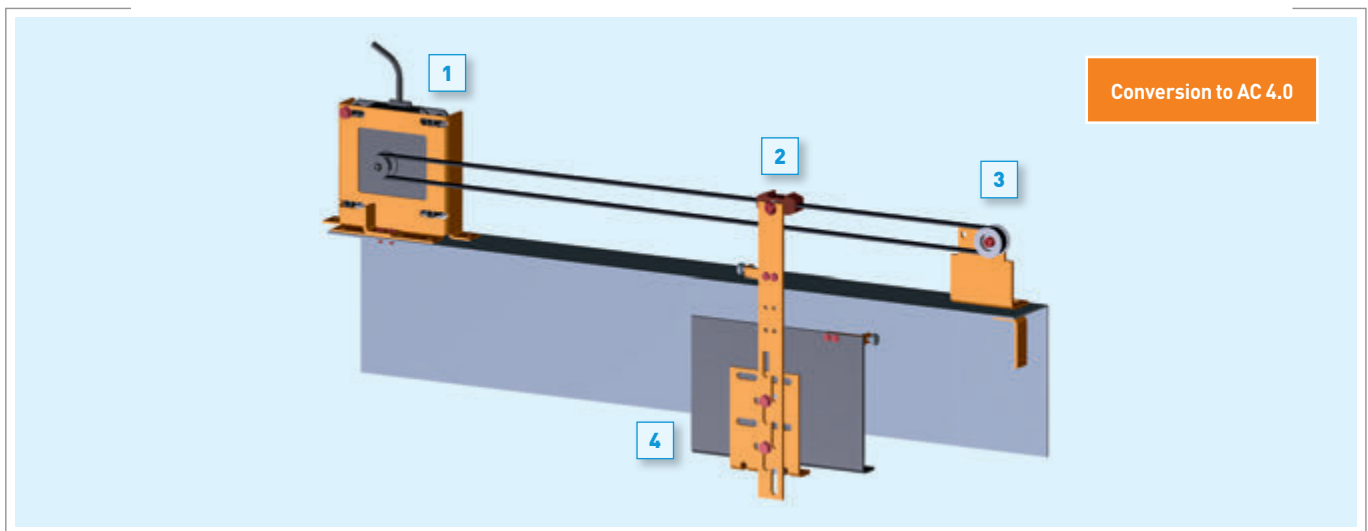


setting options for the opening and closing movements

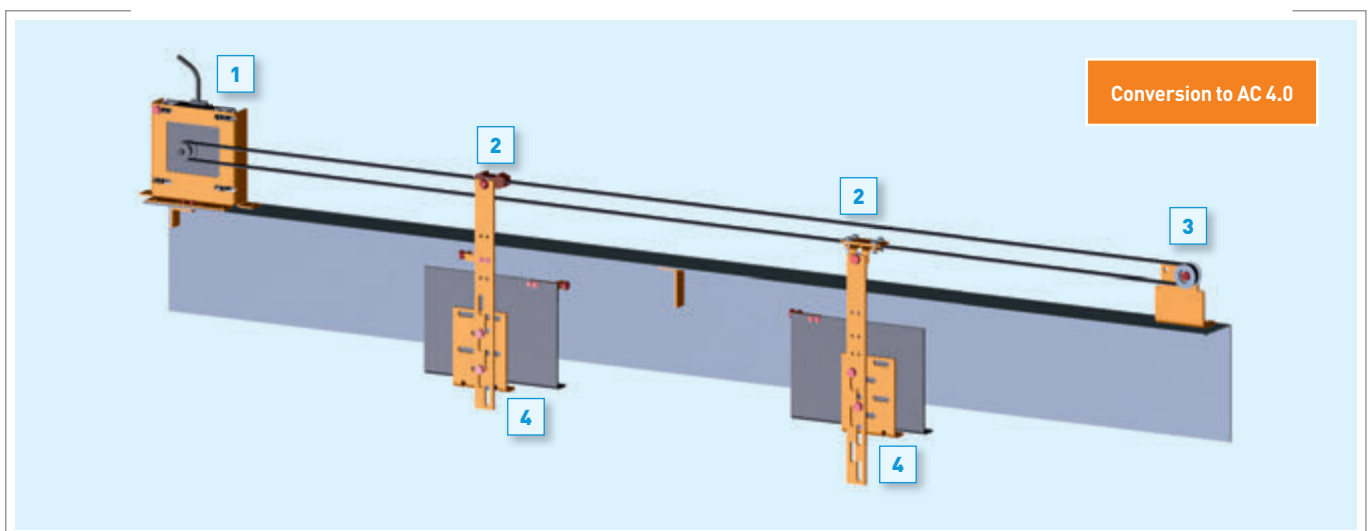
Conversion kit for third-party doors

- replacement for worn or defective third-party door drives on third-party cabin doors
- consisting of motor with fixation, door drive, deflection unit, toothed belt and toothed belt clamp, brace unit and fixation material
- principle of door drive: linear tapping of toothed belt movement and transmission to the sliding carriage
- suitable for one side opening and central opening doors
- for moving mass up to 200kg

Conversion kit 200/21/e > for standard doors one side opening with moving mass up to 200kg



Conversion kit 200/22/m > for standard doors central opening with moving mass up to 200kg

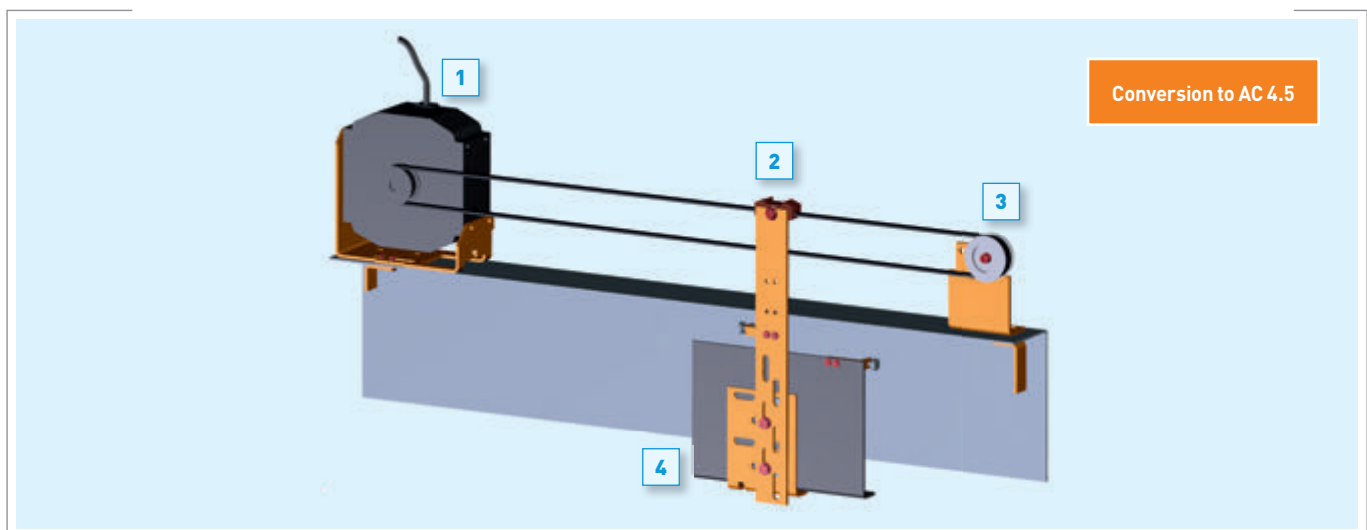


1. door drive / 2. toothed belt clamp and brace unit / 3. Deflection unit / 4. fixation of sliding carriages

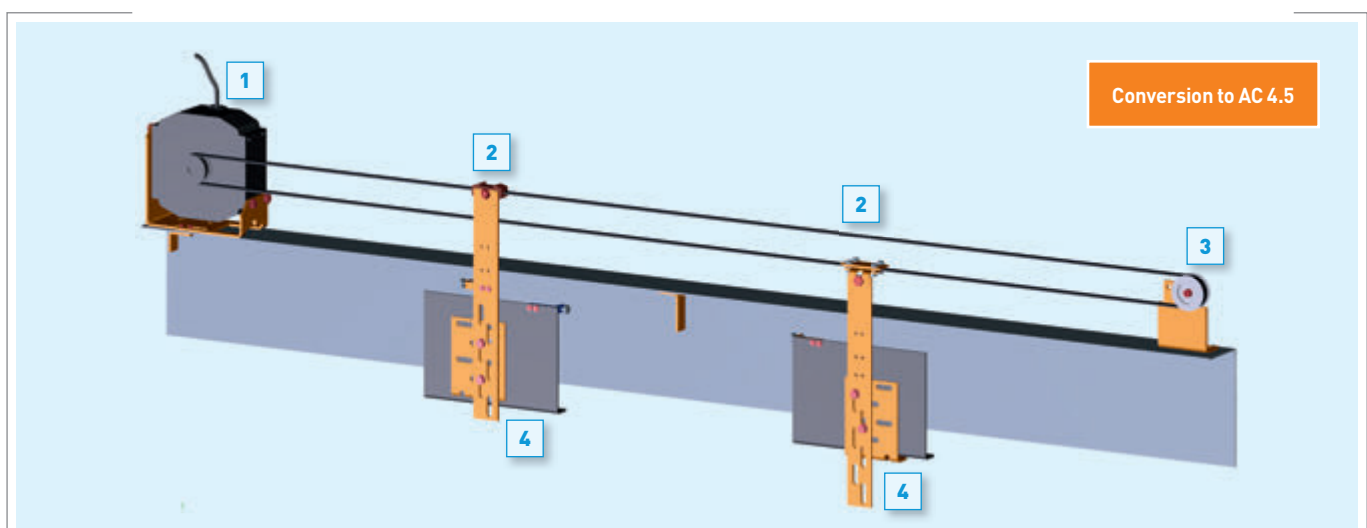
Conversion kit for third-party doors

- replacement for worn or defective third-party door drives of industry lifts or glass doors
- consisting of motor with fixation, door drive, deflection unit, toothed belt and toothed belt clamp, robust brace unit and fixation material
- principle of door drive: linear tapping of toothed belt movement and transmission to the sliding carriage
- suitable for one side opening and central opening doors
- for moving mass up to 450kg

Conversion kit 420/23/e > for heavy doors one side opening with moving mass up to 450kg



Conversion kit 420/24/m > for heavy doors central opening with moving mass up to 450kg

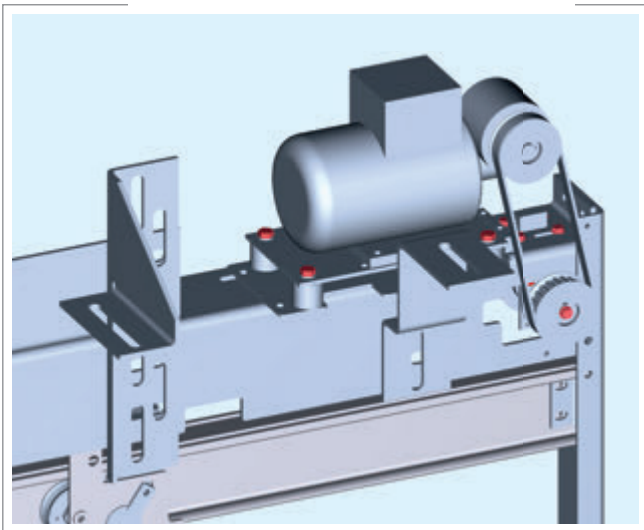


1. door drive / 2. toothed belt clamp and brace unit / 3. Deflection unit / 4. fixation of sliding carriages

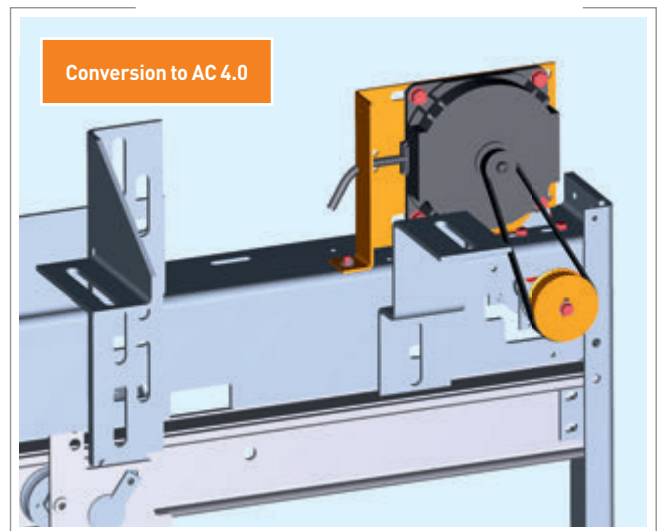
Conversion kit for ETG-doors

Conversion kit 200/17/e2m2m4

- replacement for frequency-controlled ETG drives on ETG-doors Marathon 100/200 2PS0/2PC0/4PC0
- consisting of motor with fixation, door drive, drive shaft unit, motor toothed belt, fixation material, drill template and assembly instruction
- for 2PS0 doors (=2 panels side opening), 2PC0 (=2 panels central opening) and 4PC0 (=4 panels central opening)
- for moving mass up to 200kg



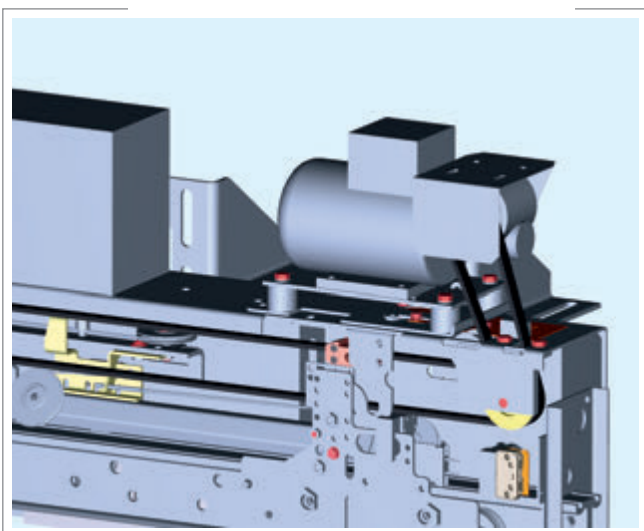
old



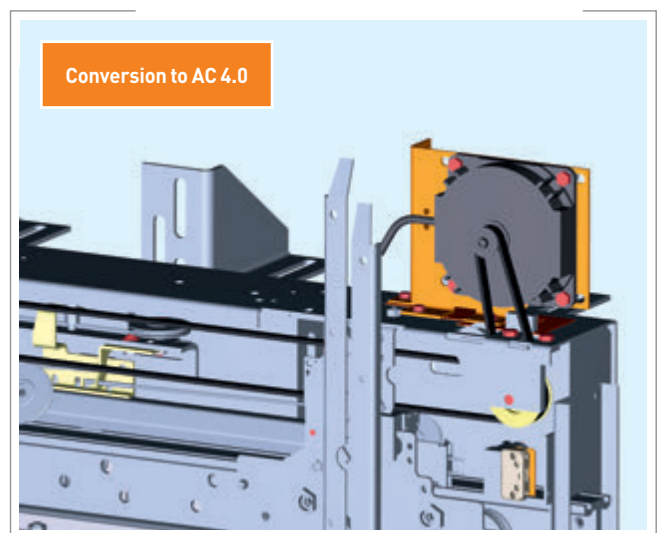
new

Conversion kit 200/18/e3

- replacement for frequency-controlled ETG drives on doors Marathon 200/3PS0
- consisting of motor with fixation, door drive, toothed belt and toothed belt clamp, fixation material, drill template and assembly instruction
- for 3PS0 doors (=3 panels side opening)
- for moving mass up to 200kg



old

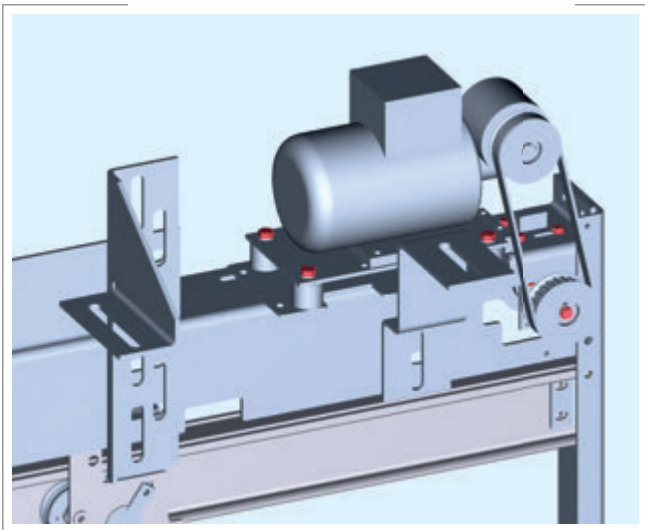


new

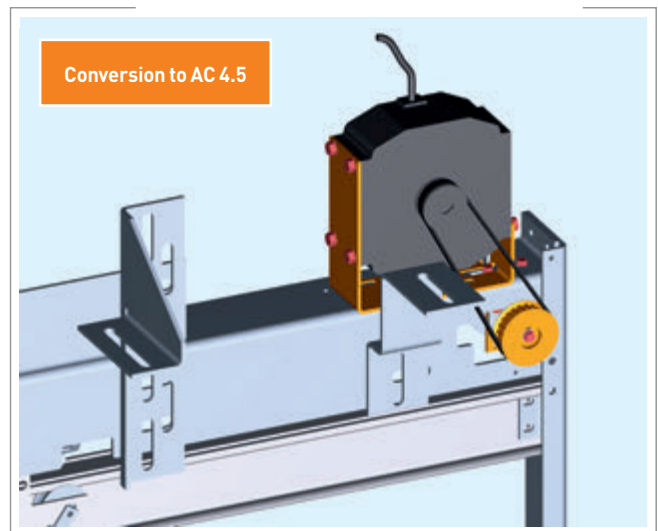
Conversion kit for ETG-doors

Conversion kit 420/19/e2m2m4

- replacement for frequency-controlled ETG drives on ETG doors Marathon 100/200 2PSO/2PCO/4PCO
- consisting of motor with fixation, door drive, drive shaft unit, motor toothed belt, fixation material, drill template and assembly instruction
- for 2PSO doors (=2 panels side opening), 2PCO (=2 panels central opening) and 4PCO (=4 panels central opening)
- for moving mass up to 450kg



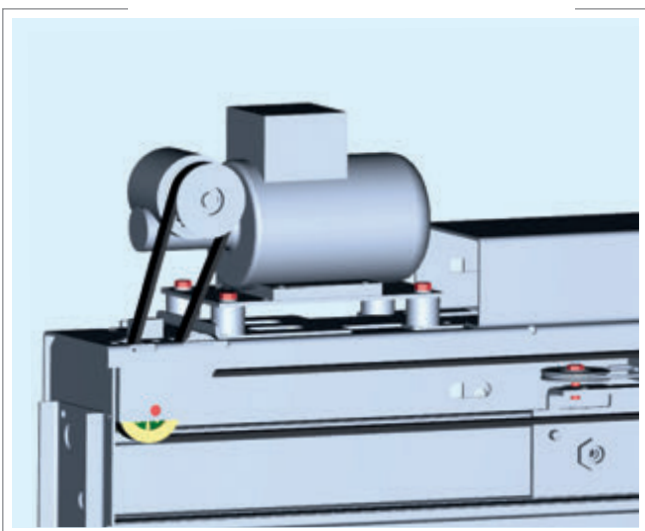
old



new

Conversion kit 420/20/e3m6

- replacement for frequency-controlled ETG drives on doors Marathon 200 3PSO/6PCO
- consisting of motor with fixation, door drive, drive shaft unit, fixation material, drill template and assembly instruction
- for 3PSO (=3 panels side opening) and 6PCO doors (=6 panels central opening)
- for moving mass up to 450kg



old



new



ETG ELEVATOR TRADING

German manufacturer

Kömmlitzer Straße 5
D-04519 Rackwitz

Phone: +49-34 294-1797-00

Fax: +49-34 294-1797-33



info@elevator-trading.de
www.elevator-trading.de
